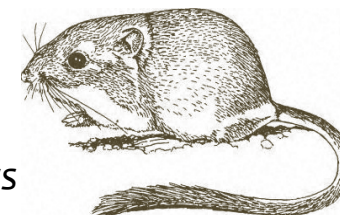


# Brown<sup>2</sup>Fest 9 June 2012

a scientific symposium honoring two extraordinary scholars



Time	Session	Moderator
0900	Introduction	Felisa Smith, <i>University of New Mexico</i>
<b>0915-1030</b>	<b>Community ecology</b>	<b>Shahroukh Mistry, <i>Butte College</i></b>
09:15	<i>Tropical arboreal ants: surprises from natural history</i>	Dinah Davidson, <i>University of Utah</i>
09:35	<i>A missing major component of community studies: us</i>	Edward J. Heske, <i>Illinois Natural History Survey</i>
09:40	<i>Competitive abilities and niches in plant community assembly</i>	Deborah Goldberg, <i>University of Michigan</i>
10:00	<i>The portal project: past, present, future</i>	Morgan Ernest, <i>Utah State University</i>
10:05	<i>On a metabolic theory of community ecology in microorganisms</i>	Jordan Okie, <i>Arizona State University</i>
10:25	<i>Portal to neon: long-term to large scale ecology</i>	Kate Thibault, <i>National Ecological Observatory Network</i>
<b>1045-1145</b>	<b>Behavior</b>	<b>Shawn Nordell, <i>Saint Louis University</i></b>
10:30	<i>The orderly universe of dominance hierarchies as social networks</i>	David B. McDonald, <i>University of Wyoming</i>
10:50	<i>Female mate choice in the brown anole, <i>Anolis sagrei</i></i>	Angela Hung, <i>University of New Mexico</i>
11:10	<i>What preference function data reveal about sexual selection and speciation</i>	David A. Gray, <i>California State University Northridge</i>
11:30	<i>The effect of heterospecific eavesdropping on caching behavior in gray squirrels</i>	Shawn E. Nordell, <i>Saint Louis University</i>
<b>1145</b>	<i>Explaining productivity/diversity patterns in the career of James Hemphill Brown: macroecology of an icon</i>	<b>Allen H. Hurlbert</b>
<b>1200</b>	<b>Lunch (provided to registered participants)</b>	<b>Atrium</b>
<b>1300-1430</b>	<b>Macroecology</b>	<b>Brian Maurer, <i>University of Michigan</i></b>
13:00	<i>The beginning of macroecology</i>	Pablo Marquet, <i>Pontificia Universidad Católica</i>
13:15	<i>Global patterns of mammalian distribution: macroecology and conservation</i>	Gerardo Ceballos, <i>Instituto de Ecología, UNAM</i>
13:30	<i>The macro and paleo of mammal body size distributions</i>	Kathleen Lyons, <i>National Museum of Natural History</i>
13:45	<i>Are invaders different than natives? Insights from a macroecological perspective</i>	Dov F. Sax, <i>Brown University</i>
14:00	<i>Extinction biology through the ecological "macroscope"</i>	Alison G. Boyer, <i>University of Tennessee</i>
14:15	<i>Three decades of homage to "two decades of homage to Santa Rosalia"</i>	Allen H. Hurlbert, <i>University of North Carolina, Chapel Hill</i>
14:30	<i>Building a bigger macroscope</i>	Ethan P. White, <i>Utah State University</i>
<b>1445-1550</b>	<b>Evolution/speciation</b>	<b>Andrew Edelman, <i>University of Wyoming</i></b>
14:45	<i>Complexity of manakin social networks emerges from cooperation with long-term partners and friends of a friend</i>	Andrew Edelman, <i>University of Wyoming</i>
15:00	<i>Frequency-dependent predator-prey interactions maintain reproductive isolation in rapidly evolved, sympatric pupfish species flocks</i>	Rhiannon West, <i>University of New Mexico</i>
15:15	<i>A genetic approach to ecosystem restoration</i>	Tom Whitham, <i>Northern Arizona University</i>
15:30	<i>Constructal law meets original law: indigenous insights into the nature of life</i>	Ray Pierotti, <i>University of Kansas</i>
15:45	<i>A few words</i>	Various Kodric-Brown peeps
<b>1600-1715</b>	<b>Metabolic ecology</b>	<b>Melanie Moses, <i>University of New Mexico</i></b>
16:00	<i>Actually, James H. Brown *is* an evolutionary biologist: testing the core evolutionary assumptions of metabolic scaling theory</i>	Brian Enquist, <i>University of Arizona</i>
16:20	<i>Not only the M, but also the T!</i>	Wenyun ZOU, <i>Missouri University of Science &amp; Technology</i>
16:30	<i>Effects of size ratios and dimensionality on consumer-Resource interactions</i>	Van Savage, <i>University of California Los Angeles</i>
16:40	<i>Ants, humans and the Brown lab, the metabolic ecology of social animals</i>	Melanie Moses, <i>University of New Mexico</i>
16:55	<i>Biology meets physics; reminiscences and appreciation of a beautiful relationship</i>	Geoffrey West, <i>Santa Fe Institute</i>
<b>17:15</b>	<b>Musings</b>	<b>Jim Brown and Astrid Kodric-Brown</b>



**Sponsored by** the UNM Department of Biology, Dean of Arts and Sciences, the UNM President's office and the Program in Interdisciplinary Biological and Biomedical Sciences (PiBBs). We thank these entities for their generosity. For more information, please contact: Nathan Holscher, PiBBs Program Manager, [holscher@unm.edu](mailto:holscher@unm.edu)